



ISTSS 2016

OUR NEWSLETTER

Thank you everyone who was able to attend the SIG Annual Meeting at ISTSS this past November in Dallas. At the meeting, we announced that we will begin publishing a biannual newsletter with important updates, research highlights, and spotlights on students, researchers, and clinicians working in the field of trauma and SUD. We welcome submissions of articles for future newsletters or suggestions for topics to cover. We are also encouraging SIG members to nominate students, clinicians, and researchers to be spotlighted in an upcoming issue.

We hope you find the newsletters helpful and interesting!

Sincerely,

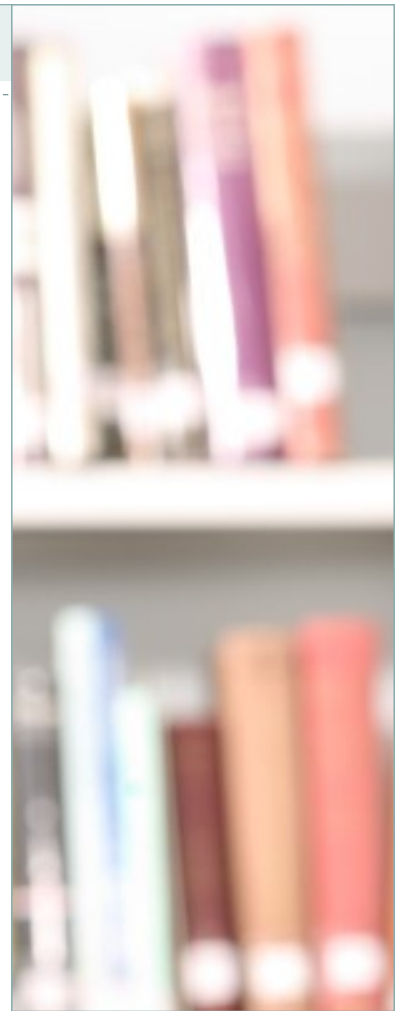
Anka A. Vujanovic & Marcel O. Bonn-Miller (SIG Chairs / Newsletter Editors)

Mallory J. E. Loflin (SIG Student Co-Chair / Newsletter Assistant Editor)

SIG: MISSION STATEMENT

The ISTSS Trauma and Substance Use Disorders (SUD) SIG was founded in 2010. The SIG offers an international multidisciplinary forum for discussion, networking, and collaboration about clinical and research practices relevant to traumatic stress and SUD. The overarching aims of the SIG include:

1. advocating for greater recognition, scholarly attention, and clinical knowledge regarding the highly prevalent and difficult-to-treat occurrence of SUD among trauma-exposed populations with and without PTSD.
2. fostering basic, clinical, translational, and implementation research efforts relevant to traumatic stress and SUD via discussion and collaboration among multidisciplinary members from various regions of the world.
3. advancing evidence-based clinical practices relevant to the assessment and treatment of (1) SUD among trauma-exposed populations; (2) concurrent PTSD and SUD; and (3) PTSD among substance using populations.
4. supporting dissemination and implementation efforts for relevant evidence-based treatments.
5. advancing prevention of SUD in the aftermath of trauma exposure, and prevention of PTSD among individuals with a history of SUD.



INSIDE THIS ISSUE

Endorsed Presentations.....	2
Spotlight: Mallory Loflin	2
Spotlight: SIG Speakers	3
Highlighted Research.....	4-7
Article Submissions	6
Nominations for Spotlights	6

JOINING THE SIG

1. Log into the ISTSS website as a member
2. Under "For Members," click on "Special Interest Groups"
3. Under "Get Involved, join a Sig," click on the form link
4. Scroll through the Listservs/Communities tab
5. Choose #39—"Trauma and Substance Use Disorders"
6. Click "Save"



ISTSS 32ND ANNUAL MEETING—TRAUMA AND SUD SIG ENDORSED PRESENTATIONS

Back, S., Gros, D., Korte, K., & Brady, K. (2016, November). Treatment of PTSD and comorbid addictions with N-acetylcysteine. In D. Hien (Chair), *Integrative Approaches for Traumatic Stress Disorders and Addictions Using CBT and Biological Interventions*. Symposium conducted at the annual meeting of the International Society for Traumatic Stress Studies, Dallas, TX.

Kehle-Forbes, S., Drapkin, M., Foa, E., Koffel, E., Pousny, M., Van Horn, D., Ysko, D., & Oslin, D. A Randomized clinical trial of sequential versus integrated treatment for veterans with co-occurring PTSD and substance use disorders. In S. Kehle-Forbes (Chair), *The Treatment of Co-occurring PTSD and Substance-related Disorders*. Symposium conducted at the annual meeting of the International Society for Traumatic Stress Studies, Dallas, TX.

Papini, S., Ruglass, L., Lopez-Castro, T., Powers, M., Smits, J., & Hien, D. Chronic cannabis use is associated with impaired fear extinction in humans. In N. Fani (Chair), *Attention to Emotion in Posttraumatic Stress Disorder: Neurobiological Response to Positive Cues and Relationship to Recovery*. Symposium conducted at the annual meeting of the International Society for Traumatic Stress Studies, Dallas, TX.

STUDENT CO-CHAIR

Student Co-Chairs will be appointed every two years.

Student Co-Chairs assist the SIG Chairs with all organizational and administrative responsibilities of the SIG. Announcements of position openings will be disseminated via the SIG list-serve.

SPOTLIGHT—NEW STUDENT CO-CHAIR

Mallory Loflin, Ph.D.

Dr. Loflin is postdoctoral research fellow with the National Center for PTSD, Menlo Park Division, at Veterans Affairs Palo Alto and Stanford University. Dr. Loflin



earned her B.A. in Psychology from the University of Washington and her Ph.D. in Clinical Psychology from the University at Albany, State University of New York (SUNY). While in graduate school, Dr. Loflin worked under the mentorship of Mitch Earleywine, Ph.D. She completed her pre-doctoral clinical internship at the UCSD/San Diego VA consortium under the supervision of Abigail Angkaw,

Ph.D. and Ryan Trim, Ph.D. Dr. Loflin's current research interests surround the potential clinical application of cannabinoids for the treatment of mental health conditions. She is particularly focused on testing the therapeutic value of medicinal cannabis as an adjunctive to treatment for trauma-related disorders.



SPOTLIGHT— HONORARY SPEAKERS FROM SIG ANNUAL MEETING



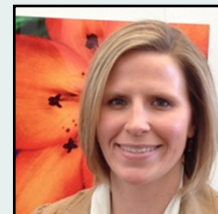
OUR SPEAKERS

Carolyn Sartor, Ph.D.



Dr. Sartor is an Assistant Professor of Psychiatry within the Yale University, School of Medicine. Dr. Sartor's program of research is aimed at refining etiological models of substance use disorders in adolescents and young adults by integrating a developmental psychopathology perspective with genetically-informative designs. The identification of differences by gender and race/ethnicity in the contribution of various risk and protective factors to substance use behaviors is central to this pursuit. Dr. Sartor studies the progression through stages of substance use (e.g., initiation, onset of symptoms) and the timing of stage transitions in relation to the onset of psychiatric disorders and trauma exposure, with a particular focus on the influence of childhood sexual abuse on the course of alcohol and drug use in women.

Kimberly Werner, Ph.D.



Dr. Werner is a postdoctoral research scholar at Washington University in St. Louis, George Warren Brown School of Social Work working under the mentorship of Dr. Kathleen Bucholz. Her research focuses on racial disparities in trauma related etiology of psychopathology, specifically substance related outcomes. This work indicates trauma exposures are important contributors to alcohol and cannabis at all stages of use with different trauma types conferring risk in White and African American women. Currently, Dr. Werner's research has attempted to broaden the operationalization of stress by examining the impact of chronic stressors, including racial discrimination, intergenerational stress (i.e. maternal report of racial discrimination and traumatic exposure), and neighborhood disadvantage, on young adult offspring, substance involvement, and mental health outcomes.

Dr. Sartor's Presentation: "The Intersection of Race/Ethnicity, Trauma, and Substance Use Related Problems"

Elevated rates of trauma exposure in African Americans compared to Whites are at odds with lower rates of drinking, smoking and alcohol and nicotine use disorders in African Americans. The few investigations that have examined potential differences in the association between trauma and substance use outcomes have revealed distinctions with respect to the magnitude of association and developmental stages at which risk conferred by trauma is most robust. Although findings vary by substance, taken together, they suggest that the etiological models of alcohol and other substance use disorders, including the risk conferred by trauma, do not fit as well for African Americans as Whites. A broader perspective on stressors, especially those that disproportionately impact African Americans, such as racial discrimination and poverty, is needed to identify modifiable risk factors and protective factors that may buffer against risk for problem substance use associated with trauma exposure.

Dr. Werner's Presentation: "Variability in the Associations of Traumatic Events with Stages of Alcohol and Cannabis Involvement in African Americans and Whites"

Despite higher rates of traumatic stress exposure in African Americans, alcohol involvement at all levels is lower in African Americans compared to Whites. The presentation characterized racial differences in alcohol involvement by examining the risk conferred by specific trauma exposures and PTSD for different stages of alcohol involvement in African American and White women. To further elucidate racial differences in the association the focus was narrowed to childhood physical abuse (CPA) characteristics, such as endorsement pattern and gender of the perpetrator. Findings from these studies indicate that how you ask about CPA (i.e. behavioral questioning versus trauma checklist) and perpetrator gender matter when linking CPA to alcohol involvement. Overall, findings suggest existing environmental etiological models of AUD development may not fit as well for African American women as White women.

SPECIAL ISSUE IN

PSYCHOLOGY OF ADDICTIVE BEHAVIORS

One of the highlights of the year for our special interest group was the publication of our SIG-sponsored special issue, entitled "Co-Occurring Posttraumatic Stress and Substance Use: Emerging Research on Correlates, Mechanisms, and Treatments," in *Psychology of Addictive Behaviors* (November 2016). The issue included contributions from several of our SIG members. Thank you to everyone who submitted manuscripts!

HIGHLIGHTED RESEARCH

During 2016, the below-listed articles were disseminated to members via the ISTSS SIG listserv - monthly research updates. Note: * denotes articles included in the SIG sponsored special issue of Psychology of Addictive Behaviors

Acosta, M. C., Possemato, K., Maisto, S. A., Marsch, L. A., Barrie, K., Lantinga, L., ... & Rosenblum, A. (2016). Web-delivered CBT reduces heavy drinking in OEF-OIF veterans in primary care with symptomatic substance use and PTSD. *Behavior Therapy*. Epub ahead of print. <http://dx.doi.org/10.1016/j.beth.2016.09.001>

Banducci, A. N., Bujarski, S. J., Bonn-Miller, M. O., Patel, A., & Connolly, K. M. (2016). The impact of intolerance of emotional distress and uncertainty on veterans with co-occurring PTSD and substance use disorders. *Journal of Anxiety Disorders*. Epub ahead of print. <http://dx.doi.org/10.1016/j.janxdis.2016.03.003>

*Berenz, E. C., Kevorkian, S., Chowdhury, N., Dick, D. M., Kendler, K. S., & Amstadter, A. B. (2016). Posttraumatic stress disorder symptoms, anxiety sensitivity, and alcohol-use motives in college students with a history of interpersonal trauma. *Psychology of addictive behaviors*, 30(7), 755. <http://dx.doi.org/10.1037/adb0000193>

Bernardy, N. C., & Friedman, M. J. (2016). How and why does the pharmaceutical management of PTSD differ between men and women? *Expert Opinion on Pharmacotherapy*. Epub ahead of print. <http://dx.doi.org/10.1080/14656566.2016.1199686>

Blayney, J. A., Read, J. P., & Colder, C. (Jul 2016). Role of Alcohol in College Sexual Victimization and Postassault Adaptation. *Psychological Trauma: Theory, Research, Practice, and Policy*, 8(4), 421-430. <http://dx.doi.org/10.1037/tra0000100>

Boutress, K., Adams, Z. W., Gilmore, A. K., Amstadter, A. B., Thomas, S., & Danielson, C. K. (2016). Associations among impulsivity, trauma history, and alcohol misuse within a young adult sample. *Addictive Behaviors*. Epub ahead of print. <http://dx.doi.org/10.1016/j.addbeh.2016.08.031>

Bowen, S., De Boer, D., & Bergman, A. L. (2016). The role of mindfulness as approach-based coping in the PTSD-substance abuse cycle. *Addictive Behaviors*. Epub ahead of print. <http://dx.doi.org/10.1016/j.addbeh.2016.08.043>

Carter, S. P., DiMauro, J., Renshaw, K. D., Curby, T. W., Babson, K. A., Bonn-Miller, M. O. (2016). Longitudinal associations of friend-based social support and PTSD symptomatology during a cannabis cessation attempt. *Journal of Anxiety Disorders*, 38, 62-67. <http://dx.doi.org/10.1016/j.janxdis.2016.01.008>

Cheng, V., Inaba, K., Johnson, M., Byerly, S., Jiang, Y., Matsushima, K., ... & Demetriades, D. (upcoming 2016). The impact of pre-injury controlled substance use on clinical outcomes following trauma. *Journal of Trauma and Acute Care Surgery*. Epub ahead of print. <http://dx.doi.org/10.1097/TA.0000000000001229>

Chester, J. A., & Weera, M. M. (2016). Genetic Correlation between Alcohol Preference and Conditioned Fear: Exploring a Functional Relationship. *Alcohol*. Epub ahead of print. <http://dx.doi.org/10.1016/j.alcohol.2016.06.006>

*Coffey, S. F., Schumacher, J. A., Nosen, E., Littlefield, A. K., Henslee, A. M., Lappen, A., & Stasiewicz, P. R. (2016). Trauma-focused exposure therapy for chronic posttraumatic stress disorder in alcohol and drug dependent patients: A randomized controlled trial. *Psychology of Addictive Behaviors*, 30(7), 778. <http://dx.doi.org/10.1037/adb0000201>

Cui, R., Haller, M., Skidmore, J. R., Goldsteinholm, K., Norman, S., & Tate, S. R. (2016). Treatment attendance among Veterans with depression, substance use disorder, and trauma. *Journal of Dual Diagnosis*. Epub ahead of print. <http://dx.doi.org/10.1080/15504263.2016.1146384>

Davis, A. K., Bonar, E. E., Iigen, M. A., Walton, M. A., Perron, B. E., Chermack, S. T. (2016). Factors associated with having a medical marijuana card among Veterans with recent substance use in VA outpatient treatment. *Addictive Behaviors*. Epub ahead of print. <http://dx.doi.org/10.1016/j.addbeh.2016.07.006>

Desmarais, S.L., Gray, J. S., Rade, C. B., Cohn, A. M., Doherty, S., & Knight, K. (Jul 2016). Medication-assisted treatment and violent outcomes in community-based offenders with alcohol and drug use problems. *Psychology of Violence*, 6(3), 378-389 <http://dx.doi.org/10.1037/vio0000047>

Dworkin, E. R., Mota, N. P., Schumacher, J. A., Vinci, C., & Coffey, S. F. (2016). The Unique Associations of Sexual Assault and Intimate Partner Violence with PTSD Symptom Clusters in a Traumatized Substance-Abusing Sample. *Psychological Trauma: Theory, Research, Practice, and Policy*. Epub ahead of print. <http://dx.doi.org/10.1037/tra0000212>

Flanagan, J. C., Hakes, J. K., McClure, E. A., Snead, A. L., & Back, S. E. (2016). Effects of intimate partner violence, PTSD, and alcohol use on cigarette smoking in a nationally representative sample. *The American Journal on Addictions*, 25(4), 283-90. <http://dx.doi.org/10.1111/ajad.12381>

Flanagan, J. C., Korte, K. J., Killeen, T. K., & Back, S. E. (2016). Concurrent treatment of substance use and PTSD. *Current Psychiatry Reports*, 18(8), 70. <http://dx.doi.org/10.1007/s11920-016-0709-y>

Garland, E. L., Roberts-Lewis, A., Tronnier, C. D., Graves, R., Kelley, K. (2016). Mindfulness-Oriented Recovery Enhancement versus CBT for co-occurring substance dependence, traumatic stress, and psychiatric disorders: Proximal outcomes from a pragmatic randomized trial. *Behavior Research and Therapy*, 77, 7-16. <http://dx.doi.org/10.1016/j.brat.2015.11.012>

Gentes, E. L., Schry, A. R., Hicks, T. A., Clancy, C. P., Collie, C. F., Kirby, A. C., . . . Calhoun, P. S. (2016). Prevalence and correlates of cannabis use in an outpatient VA posttraumatic stress disorder clinic. *Psychology of Addictive Behaviors*, 30, 415-21. <http://dx.doi.org/10.1037/adb0000154>.

Gilmore, A. K., Brignone, E., Painter, J. M., Lehavot, K., Fargo, J., Suo, Y., . . . & Gundlapalli, A. V. (upcoming 2016). Military Sexual Trauma and Co-occurring Posttraumatic Stress Disorder, Depressive Disorders, and Substance Use Disorders among Returning Afghanistan and Iraq Veterans. *Women's Health Issues*. Epub ahead of print. <http://dx.doi.org/10.1016/j.whi.2016.07.001>

Gilmore, A. K., Wilson, S. M., Skopp, N. A., Osenbach, J. E., & Reger, G. (upcoming 2016). A systematic review of technology-based interventions for co-occurring substance use and trauma symptoms. *Journal of telemedicine and telecare*, Epub ahead of print. <http://dx.doi.org/10.1177/1357633X16664205>

Gilpin, N. W., & Weiner, J. L. (2016). Neurobiology of Co-morbid Post-Traumatic Stress Disorder & Alcohol Use Disorder. *Genes, Brain and Behavior*. Epub ahead of print. <http://dx.doi.org/10.1111/gbb.12349>

Goldstein, R. B., Smith, S. M., Chou, S. P., Saha, T. D., Jung, J., Zhang, H., . . . Grant, B. F. (2016). The epidemiology of DSM-5 posttraumatic stress disorder in the United States: results from the National Epidemiologic Survey on Alcohol and Related Conditions-III. *Social Psychiatry and Psychiatric Epidemiology*. Epub ahead of print. <http://dx.doi.org/10.1007/s00127-016-1208-5>

*Gorka, S. M., MacNamara, A., Aase, D. M., Proescher, E., Greenstein, J. E., Walters, R., . . . & Digangi, J. A. (2016). Impact of alcohol use disorder comorbidity on defensive reactivity to errors in veterans with posttraumatic stress disorder. *Psychology of addictive behaviors*, 30(7), 733. <http://dx.doi.org/10.1037/adb0000196>

Gradus, J. L., Leatherman, S., Curreri, A., Myers, L. G., Ferguson, R., & Miller, M. (2016). Gender Differences in Substance Abuse, PTSD and Intentional Self-Harm among Veterans Health Administration Patients. *Drug and Alcohol Dependence*. Epub ahead of print. <http://dx.doi.org/10.1016/j.drugalcdep.2016.11.012>

Green, B. L., Dass-Brailsford, P., Hurtado de Mendoza, A., Mete, M., Lynch, S. M., DeHart, D. D., Belknap, J. (2016). Trauma experiences and mental health among incarcerated women. *Psychological Trauma: theory, research, practice and policy*. Epub ahead of print. <http://dx.doi.org/10.1037/tra0000113>

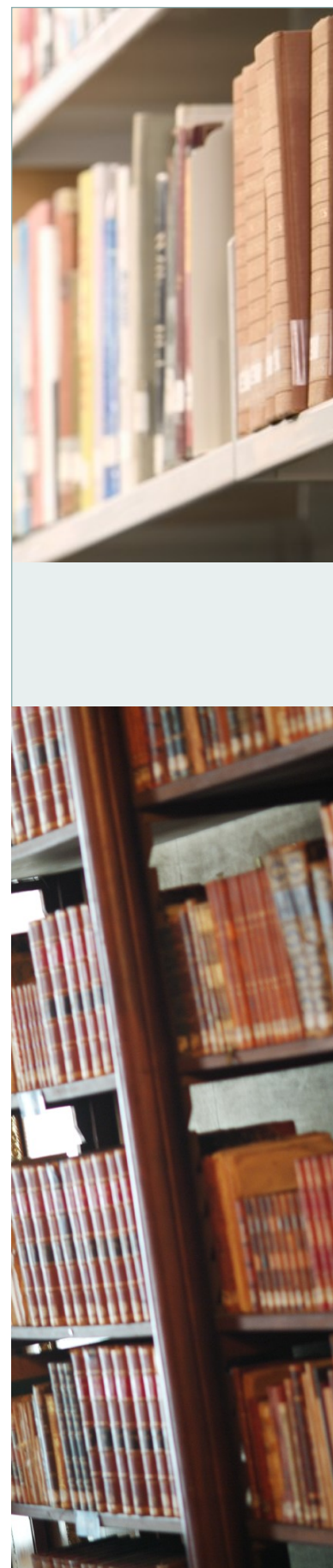
*Gros, D. F., Flanagan, J. C., Korte, K. J., Mills, A. C., Brady, K. T., & Back, S. E. (2016). Relations among social support, PTSD symptoms, and substance use in veterans. *Psychology of Addictive Behaviors*, 30(7), 764. <http://dx.doi.org/10.1037/adb0000205>

Guina, J., Nahhas, R. W., Kawalec, K., & Farnsworth, S. (2016). Are gender differences in DSM-5 PTSD symptomatology explained by sexual trauma?. *Journal of interpersonal violence*. Epub ahead of print. <http://dx.doi.org/10.1177/0886260516677290>

Haller, M., Colvonen, P. J., Davis, B. C., Trim, R. S., Bogner, R., Sevcik, J., & Norman, S. B. (2016). Examining pretreatment differences between veterans in residential versus outpatient treatment for alcohol use disorder and comorbid combat-related PTSD. *Journal of dual diagnosis*. Epub ahead of print. <http://dx.doi.org/10.1080/15504263.2016.1256516>

Haller, M., Norman, S. B., Cummins, K., Trim, R. S., Xu, X., Cui, R. . . Tate, S. R. (2016). Integrated Cognitive Behavioral Therapy versus Cognitive Processing Therapy for adults with depression, substance use disorder, and trauma. *Journal of Substance Abuse Treatment*, 62, 38-48. <http://dx.doi.org/10.1016/j.jsat.2015.11.005>

Johnson, M. J., Pierce, J. D., Mavandadi, S., Defelice, D., Ingram, E., & Oslin, D. W. (2016). Mental health symptom severity in cannabis using and non-using veterans with probable PTSD. *Journal of Affective Disorders*, 190, 439-42. <http://dx.doi.org/10.1016/j.jad.2015.10.048>



ARTICLE SUBMISSIONS

The Trauma and Substance Use Disorders SIG welcomes submissions to the bi-annual newsletter. The purpose of the newsletter is to communicate SIG-related news and disseminate information regarding research, clinical practice, and training in trauma and substance use. Article submissions can include commentaries on research, clinical practice, or training. Submissions from students are welcome! Sample topics include research participant recruitment and retention, optimal training in PTSD/SUD comorbidity, book reviews, clinical dialogues, student issues, and dissemination and implementation discourse.

Questions regarding article submissions should be addressed to the SIG Chairs. Articles should be submitted via e-mail to:

Dr. Anka Vujanovic
(aavujano@central.uh.edu)

&

Dr. Marcel Bonn-Miller
(mbonn@mail.med.upenn.edu)

Articles should be no longer than approximately 3 double-spaced pages. Brief articles are preferred!

NOMINATIONS FOR SPOTLIGHTS

The Trauma and Substance Use Disorders SIG welcomes nominations for students, researchers, and clinicians to be "spotlighted" in an upcoming newsletter. Self-nominations are accepted! Nominations should include a brief, one paragraph nominating statement and CV of the nominee.

Nomination materials should be addressed to the SIG Chairs via email:

Dr. Anka Vujanovic
(aavujano@central.uh.edu)

&

Dr. Marcel Bonn-Miller
(mbonn@mail.med.upenn.edu)

HIGHLIGHTED RESEARCH

Kaczurkin, A. N., Asnaani, A., Alpert, E., & Foa, E. B. (2016). The impact of treatment condition and the lagged effects of PTSD symptom severity and alcohol use on changes in alcohol craving. *Behavior Research and Therapy*, 79, 7-14. <http://dx.doi.org/10.1016/j.brat.2016.02.001>.

Langdon, K. J., Rubin, A., Brief, D. J., Enggasser, J. L., Roy, M., Solhan, M., ... & Keane, T. M. (2016). Sexual traumatic event exposure, posttraumatic stress symptomatology, and alcohol misuse among women: A critical review of the empirical literature. *Clinical Psychology: Science and Practice*. Epub ahead of print. <http://dx.doi.org/10.1111/cpsp.12167>

Lee, J. C., Wang, P., & Tsien, J. Z. (Sept. 2016). Dopamine Rebound-Excitation Theory: Putting Brakes on PTSD. *Frontiers in Psychiatry*, 7, 163. <http://dx.doi.org/10.3389/fpsyg.2016.00163>

Lee, J. Y., Brook, J. S., Finch, S. J., & Brook, D. W. (2016). Pathways from victimization to substance use: Post traumatic stress disorder as a mediator. *Psychiatry Research*, 237, 153-158. <http://dx.doi.org/10.1016/j.psychres.2016.01.049>

Lenz, A. S., Henesy, R., & Callender, K. (2016). Effectiveness of seeking safety for co-occurring posttraumatic stress disorder and substance Use. *Journal of Counseling and Development*, 94, 51-61. <http://dx.doi.org/10.1002/jcad.12061>

McDermott, M. J., Fulwiler, J. C., Smitherman, T. A., Gratz, K. L., Connolly, K. M., Tull, M. T. (2016). The relation of PTSD symptoms to migraine and headache-related disability among substance dependent inpatients. *Journal of Behavioral Medicine*, 29, 300-9. <http://dx.doi.org/10.1007/s10865-015-9697-3>.

McDevitt-Murphy, M. E., Luciano, M. T., Tripp, J. C., & Eddinger, J. E. (upcoming 2016). Drinking motives and PTSD-related alcohol expectancies among combat veterans. *Addictive Behaviors*. Epub ahead of print. <http://dx.doi.org/10.1016/j.addbeh.2016.08.029>

*Metrik, J., Jackson, K., Bassett, S. S., Zvolensky, M. J., Seal, K., & Borsari, B. (2016). The mediating roles of coping, sleep, and anxiety motives in cannabis use and problems among returning veterans with PTSD and MDD. *Psychology of Addictive Behaviors*, 30(7), 743. <http://dx.doi.org/10.1037/adbo000210>

Miller, S. M., Pedersen, E. R., & Marshall, G. N. (2016). Combat experience and problem drinking in veterans: Exploring the roles of PTSD, coping motives, and perceived stigma. *Addictive Behaviors*. Epub ahead of print. <http://dx.doi.org/10.1016/j.addbeh.2016.11.011>

Najavits, L. M., Lande, R. G., Gragnani, C., Isenstein, D., & Schmitz, M. (Aug. 2016). Seeking Safety Pilot Outcome Study at Walter Reed National Military Medical Center. *Military medicine*, 181(8), 740-746. <http://dx.doi.org/10.7205/MILMED-D-15-00270>

Peirce, J. M., Brooner, R. K., King, V. L., & Kidorf, M. S. (2016). Effect of traumatic event reexposure and PTSD on substance use disorder treatment response. *Drug and Alcohol Dependence*, 158, 126-31. <http://dx.doi.org/10.1016/j.drugalcdep.2015.11.006>

Petermind, R., (2016). Sexual risk, substance use, mental health, and trauma experiences of gang-involved homeless youth. *Journal of Adolescence*, 48, 73-81. <http://dx.doi.org/10.1016/j.adolescence.2016.01.009>

Radomski, S. A., & Read, J. P. (Jun 2016). Mechanistic role of emotion regulation in the PTSD and alcohol association. *Traumatology*, 22(2), 113-121. <http://dx.doi.org/10.1037/trm0000068>

Ramos, Z., Fortuna, L. R., Porche, M. V., Wang, Y., Shrout, P. E., Loder, S., . . . Algeria, M. (2016). Posttraumatic stress symptoms and their relationship to drug and alcohol use in an international sample of Latino immigrants. *Journal of Immigrant and Minority Health*. Epub ahead of print. <http://dx.doi.org/10.1007/s10903-016-0426-y>

Roberts, N. P., Roberts, P. A., Jones, N., & Bisson, J. I. (2016). Psychological therapies for post-traumatic stress disorder and comorbid substance use disorder. *The Cochrane Database of Systematic Reviews*. Epub ahead of print. <http://dx.doi.org/10.1002/14651858.CD010204.pub2>

Saunders E. C., McLeman, B. M., McGovern, M. P., Xie, H., Lambert-Harris, C., & Meier, A. (2016). The influence of family and social problems on treatment outcomes of persons with co-occurring substance use disorders and PTSD. *Journal of Substance Use*, 21(3), 237-243. <http://dx.doi.org/10.3109/14659891.2015.1005184>

Schmied, E. A., Larson, G. E., Highfill-McRoy, R. M., & Thomsen, C. J. (November 2016). Reciprocal Relationships Between Stressors and Mental Health Problems in Military Veterans. *Journal of Social and Clinical Psychology*, 35(9), 705-721. <http://dx.doi.org/10.1521/jscp.2016.35.9.705>

Schuler, M. N., Wallington, S. F., Qualls-Hampton, R. Y., Podesta, A. E., & Suzukl, S. (2016). Trend analysis of substance abuse treatment admissions in New Orleans from 2000-2012: A population-based comparison pre- and post-hurricane Katrina. *Substance Use and Misuse*. Epub ahead of print. <http://dx.doi.org/10.1080/10826084.2016.1188952>

Schuyler, A. C., Kintzle, S., Lucas, C. L., Moore, H., & Castro, C. A. (2016). Military Sexual Assault (MSA) Among Veterans in Southern California: Associations with Physical Health, Psychological Health, and Risk Behaviors. *Traumatology*. Epub ahead of print. <http://dx.doi.org/10.1037/trm0000098>

*Sheerin, C., Berenz, E. C., Knudsen, G. P., Reichborn-Kjennerud, T., Kendler, K. S., Aggen, S. H., & Amstadter, A. B. (2016). A Population-Based Study of Help Seeking and Self-Medication Among Trauma-Exposed Individuals. *Psychology of addictive behaviors: journal of the Society of Psychologists in Addictive Behaviors*. <http://dx.doi.org/10.1037/adb0000185>

Sheerin, C., Berenz, E. C., Knudsen, G. P., Reichborn-Kjennerud, T., Kendler, K. S., Aggen, S. H., & Amstadter, A. B. (2016). A population-based study of help seeking and self-medication among trauma-exposed individuals. *Psychology of Addictive Behaviors*. Epub ahead of print. <http://dx.doi.org/10.1037/adb0000185>

*Simons, R. M., Simons, J. S., Olson, D., Baugh, L., Magnotta, V., & Forster, G. (2016). Post-traumatic stress and alcohol use among veterans: Amygdala and anterior cingulate activation to emotional cues. *Psychology of addictive behaviors*, 30(7), 720. <http://dx.doi.org/10.1037/adb0000200>

Simpson, J. L., Grant, K. M., Daly, P. M., Kelley, S. G., Carlo, G., & Bevins, R. A. (August 2016). Psychological Burden and Gender Differences in Methamphetamine-Dependent Individuals in Treatment. *Journal of Psychoactive Drugs*, 48(4), 261-269. <http://dx.doi.org/10.1080/02791072.2016.1213470>

Smith, B. C., Armelie, A. P., Boarts, J. M., Delahanty, D. L., & Brazil, M. (2016). PTSD, depression, and substance use in relation to suicidality risk among traumatized minority lesbian, gay, and bisexual youth. *Archives of Suicide Research*. Epub ahead of print. <http://dx.doi.org/10.1080/1381118.2015.1004484>

Smith, K. Z., Smith, P. H., Cercone, S. A., McKee, S. A., & Homish, G. G. (2016). Past year non-medical opioid use and abuse and PTSD diagnosis: Interactions with sex and associations with symptom clusters. *Journal of Addictive Behaviors*. Epub ahead of print. <http://dx.doi.org/10.1016/j.addbeh.2016.02.019>

Sullivan, T. P., Weiss, N. H., Flanagan, J. C., Willie, T. C., Armell, S., & Tennen, H. (2016). PTSD and daily co-occurrence of drug and alcohol use among women experiencing intimate partner violence. *Journal of Dual Diagnosis*. Epub ahead of print. <http://dx.doi.org/10.1080/15504263.2016.1146516>

Tull, M. T., Gratz, K. L., McDermott, M. J., Bordieri, M. J., Daughter, S. B. & Lejuez, C. W. (2016). The role of emotion regulation difficulties in the relation between PTSD symptoms and the learned association between trauma-related and cocaine cues. *Substance Use and Misuse*. Epub ahead of print. <http://dx.doi.org/10.3109/10826084.2016.1168445>

Tull, M. T., McDermott, M. J., & Gratz, K. L. (2016). Marijuana dependence moderates the effect of posttraumatic stress disorder on trauma cue reactivity in substance dependent patients. *Drug and Alcohol Dependence*, 159, 219-226. <http://dx.doi.org/10.1016/j.drugalcdep.2015.12.014>

*Vujanovic, A. A., Bonn-Miller, M. O., & Petry, N. M. (2016). Co-occurring posttraumatic stress and substance use: Emerging research on correlates, mechanisms, and treatments—Introduction to the special issue. *Psychology of Addictive Behaviors*, 30(7), 713. <http://dx.doi.org/10.1037/adb0000222>

Werner, K. B., Sartor, C. E., McCutcheon, V. V., Grant, J. D., Nelson, E. C., Heath, A. C., & Bucholz, K. K. (2016). Association of Specific Traumatic Experiences With Alcohol Initiation and Transitions to Problem Use in European American and African American Women. *Alcoholism: Clinical and Experimental Research*. Epub ahead of print. <http://dx.doi.org/10.1111/acer.13220>

Yeon Lee, J., Brook, J. S., Finch, S. J., & Brook, D. W. (2016). Pathways from victimization to substance use: Posttraumatic stress disorder as a mediator. *Psychiatry Research*. Epub ahead of print. <http://dx.doi.org/10.1016/j.psychres.2016.01.049>

Zang, Y., Yu, J., Chazin, D., Asnaani, A., Zandberg, L. J., & Foa, E. B. (2016). Changes in coping behavior in a randomized controlled trial of concurrent treatment for PTSD and alcohol dependence. *Behaviour Research and Therapy*. Epub ahead of print. <http://dx.doi.org/10.1016/j.brat.2016.11.013>

Zer-Aviv, T. M., Segev, A., & Akirav, I. (2016). Cannabinoids and post-traumatic stress disorder: clinical and preclinical evidence for treatment and prevention. *Behavioural Pharmacology*. Epub ahead of print. <http://dx.doi.org/10.1097/FBP.000000000000253>

